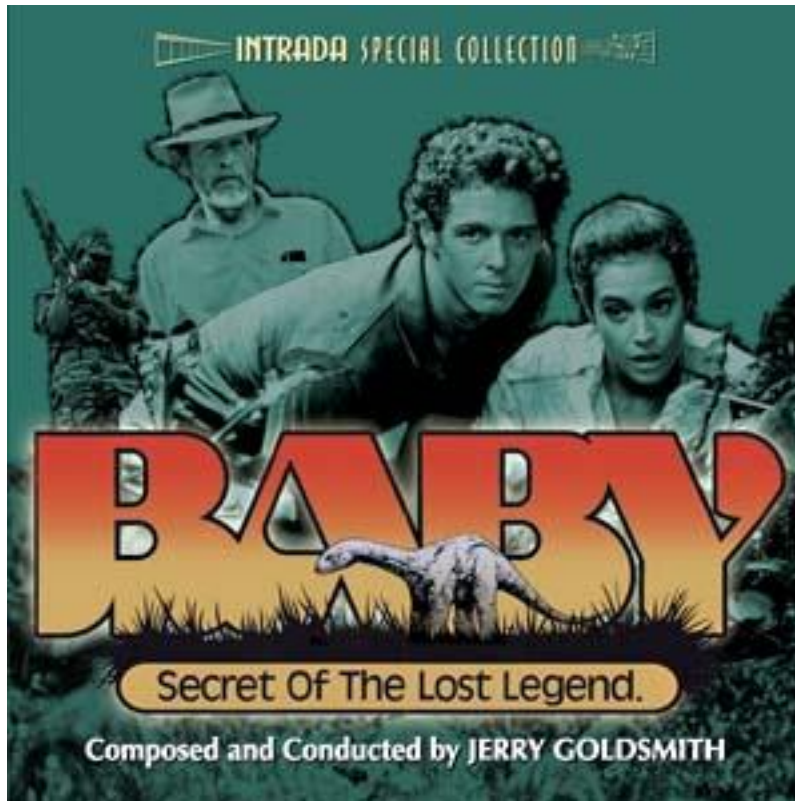


BABY: SECRET OF THE LOST LEGEND

Music by
Jerry Goldsmith

The following is a cue rundown and partial analysis of Jerry Goldsmith's score to Disney's 1985 fantasy/adventure pic, *Baby : Secret of the Lost Legend*.



[Note: This June 2004 mini-rundown was updated Friday, September 14, 2018 with written score images and a link to a new YouTube video I created just yesterday afternoon:

https://youtu.be/lGnry_zt52I [BABY]

“The Drawing” Reel 2 pt 4. 15 bars, 4 pages. 2 Flutes, 2 Oboes, 2 clarinets, 2 Fags, C.Fag., G.S. I, Dx7 II & III glock, vibe, Harp, timp, 20 violins, 8 violas, 6 celli, 4 basses. The music starts on 4/4 (C) time with the VC/CB sounding *pp* Great octave notes D quarter note tied to dotted 8th note to C 16th note (repeat the figure in the same bar) and repeat next two bars. The Dx7 (*Yamaha* digital synthesizer/electronic keyboard) II plays

Great octave D dotted half note to D quarter note to (Bar 2) D-D-D-C quarter notes to (Bar 3) D up to A 8th notes down to D dotted half note tied to next bar. The harp strums Great octave and Contra-octave D whole note (repeated in Bar 3). The timp beats *p* two Great octave D half notes (repeated next two bars).

<u>Baby</u>				
R2-P4	The Drawing	4	4 pp	15 meas
R3-P1	No Problem	4	5 pp	24 meas
R3-P2	The River	2	12 pp	66 meas
R3-P3	Picture Party	4	6 pp	27 meas
R3-P4	a Little Joke	4	3 pp	12 meas
R4-P3	The Family	4	28 pp	122 meas
R5-P1	Papa's Death	4	38 pp	176 meas
R5-P2	Papa's Gone	4	3 pp	19 meas
R6-P1	Baby + monkeys	4	16 pp	90 meas
R6-P2	Food Time	3	26 pp	138 meas
R7-P1	No Blay	4	14 pp	65 meas
7-1A	Where's Baby?	3	16 pp	64 meas
R8-P1	The Cave	8	47 pp	228 meas
R8-P4	Baby's Gone	3	10 pp	43 meas
R9-P1	The Capture	4	25 pp	130 meas
R9-P2	Mother Is Free	8	36 pp	143 meas
R10-P1	Baby's Sleep	4	43 pp	188 meas

In Bar 8 the cue is tutti in Cut time (2/2). The violins play *mf* > rapid 16th figures of Line 2 G#-F#-G#-D# (connected by two crossbeams) to C#-D#-C#-F# (repeat these two figures in the same bar). The violas play the figures in contrary motion. They play *mp* < *mf* ascending 16th notes middle C#-F#-A#-B# to Line 2 C#-D# 16ths to C# 8th figure. Repeat the figures in

Reel 2 pt 4 $\text{♩} = 1$ (cont.) *retho Drawing* **[BABY]**

Flutes mf

Oboes mf

Clars (B♭) mf

Fags C/Fag mf

G.S.I. 116 mf

glock mf

Vibe mf

Harp mf **[Hand-copied by Bill WROBEL]** (cont.)

Dx7 mf col Flutes

Violins mf

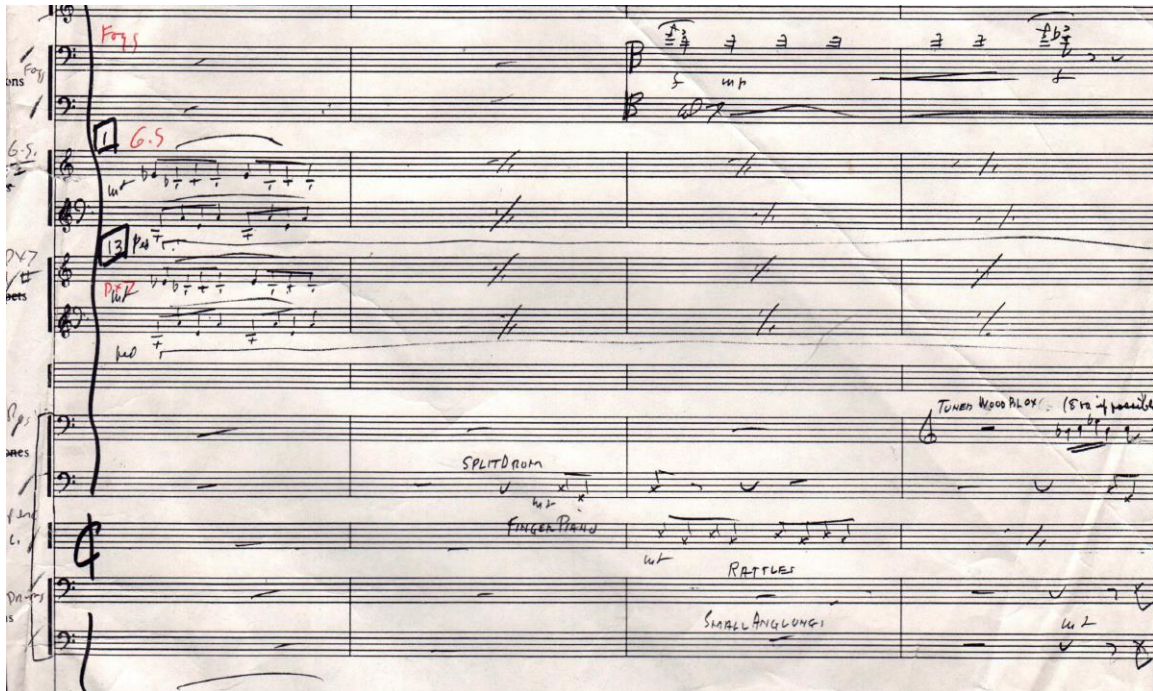
Violas mf

VC mf

CB mf col vc

8 9 10 11 12

“No Problem” Reel 3 pt 1. Cut time, 24 bars, 5 pages. 2 flutes, 2 oboes, English Horn, E-flat clarinet, Fags, G.S. I, Dx7 II& III & IV, split drum, tuned wood blox, finger piano, rattles, small anglung harp, Expander, strings.



The harp/G.G. I/Dx7 II play the ostinato 8th note patterns (upper staff shows Line 1 Eb/small octave Bb/middle C/small octave Bb, lower staff shows Great octave C up to small octave C, down to G up to C). Violas are fingered tremolo between whole notes dyads middle C/Bb (top staff), small octave G/Bb (bottom staff). The oboe, E.H., and high Fag I enter in on Bar 3, Line 2 D acciacatura (grace note) to C-C-C-C quarter notes. Various percussion oddities are joined in (rattles, split drum, etc). By Bar 15 the Violins are on sustained high D note; violas are sul ponticello bowed tremolo 8th notes D/C/D/C, F/C/D/C. The harp and G.S. I play the same note pattern as the violas. The split Dr & finger piano are active, as well as occasional quarter notes of the VC/CB. etc.

Handwritten musical score for "No problem" Baby and The River R2P2.

Score Details:

- Ob:** Oboe part, marked "Tacet" in the first measure.
- EU:** English Horn part, marked "Tacet" in the first measure.
- Pg:** Flute part, marked "Tacet" in the first measure.
- G.S.T:** Guitar, Soloist part, marked "Tacet" in the first measure.
- Strad Do:** String Duo part.
- Split Pan:** Split Pan part.
- Finger Piano:** Finger Piano part.
- Rattler:** Rattler part.
- Hand Perc:** Hand Percussion part.
- HP:** Harp part, marked "Tacet" in the first measure.
- PX 7 II:** Piano part, marked "Tacet" in the first measure.
- PX 7 III:** Piano part, marked "Tacet" in the first measure.
- PX 7 IV:** Piano part, marked "Tacet" in the first measure.
- UL:** Upright Bass part.
- V:** Violin part.
- VC:** Viola part.
- CB:** Cello part.

Measure Numbers: (14) and (15) are circled at the bottom of the page.

“The River” Reel 3 pt 2. 2/2 time, 66 bars, 12pp. Highlight of the cue (for me) are bars 59-63, when the lady protagonist (forgot the character name) utters, "Oh, my God!" to George. Classic Goldsmith flourishes of the strings. Harp is gliss *p* < *mf* on Great octave E quarter note up to Line 1 E 8th note (followed by an 8th and half rest). Violins start off fingered tremolo *p* between Line 1 E to F dotted half notes, and then play “6” sextuplet ascending 16ths B-middle C-E-F-G-A crescendo to (Bar 60) Line 1 B to A 8th fingered trem to Line 2 E legato down to Line 1 B-B “3” triplet 8ths to next triplet 8ths Line 2 C#-C-B to “6” sextuplet B-A-B-C-D-E. Viola in Bar 59 play *p* < *mf* the “6” 16th figure of small octave F-G-A-B-middle C-D to “3” figure of 8th notes E down to small octave B-B to C#-C-B to “6” figure B-middle C-E-F-E-C, and so forth. VC I play in Bar 59 Great octave “6” 16ths E-F-G-A-B-C to small octave E 8th (followed by an 8th and half rest). VC II play the same but to small octave B 8th. CB play small octave E-F-G-A-G-F 16ths to E 8th. Etc.

“Picture Party” Reel 3 pt 3. 4/4 time, 27 bars, 6pp. Piccolo, E-flat clarinet, bass clarinet, Fag, G S I, Dx7 II & IV, Bass split drum, Finger piano, clay drum, sword stick, Harp, Moog, strings. Starts with the piccolo/Moog/violins playing grace note Line 3 C# to B quarter note (violins are sustained or tied whole notes B). The sword stick was struck a quarter note, and let ring.

Reel 3pt 4 "A Little Joke" [BABY] Jerry Goldsmith

Handwritten musical score for "A Little Joke" by Jerry Goldsmith. The score is for a 12-bar, 3-part piece in 4/4 time. It features multiple staves for various instruments including Piccolo, E♭ clarinet, Bass Clarinet, Fogs, G.S.I., D x 7 II, Clay Dr., Bass Split Drum, Finger Piano, Harp, Moog, D x 7 II, Violins, Violas, VC, and CB. The score includes dynamic markings like "mf" and "f", and performance instructions like "Hand-copied by Bill W. Rebol". The piece ends with a first cue marked with circled numbers 1 through 4.

"A Little Joke" Reel 3 pt 4. 4/4 time, 12 bars, 3pp. First cue

orchestrated by Alexander Courage. Piccolo, Eb clarinet, bass clarinet, Fags, KB I & II, Dx7, Moog, Dx7[4]midi Jup [E 8], Clay Drum, Bass Split Drum, Finger Piano(Shelly), harp, 20 violins, 8 viole, 6 VC, 4 CB. Piccolo & Eb clarinet are highlighted starting Bar 3. After an 8th rest, the piccolo plays *mf* Line 2 F#-G# 16ths legato to D# 8th note (followed by two 8th rests) to F#-G# 16ths down to D#-C# 16ths. The Eb clarinet plays the same but in enharmonic (flat) notes. Violins on harmonics (D#/G# etc).

“The Family” Reel 4 pt 3 "The Family" in 4/4 time, 122 bars, 28pp. Very nice cue! Terrific orchestral devices utilized! Bars 9-12 has effective descending/ascending glissandos of the violins (C#/G# down to G#/D#, back up again, etc), ending with the rapidly rising 16th notes flourish of the flutes (C#-D#-E-F#-G#-A#-C-D-E), with the oboes helping partially. George says, "Listen!" and the girl responds with "C'mon!" Then the muted trumpet I rapidly plays. Starting with four written F# 16th notes. The violins add with the 16th note figures. They see the dinosaur, and the Pos & Tuba sound off majestically (D note initially). The African Marimba plays triplets col the Oboe, along with the flutes & clarinets & Dx7. Soon flute I/oboe I/clarinet I play the upbeat melody line, and small Loo-Johns are sounding 16th notes.



Reel 4PT3 "The Family")

[Baby]

Tony Goldsmith

G. P.

Handwritten musical score for a symphony orchestra, featuring various instruments and a conductor's part. The score is written on multiple staves, with some parts marked "G.P." (Grand Part).

Instruments and Parts:

- Flutes (2)
- Oboes (2)
- Clarinets (2)
- Horns (I, II)
- Pos (Positone)
- Vib (Vibraphone)
- Steel Dr (Steel Drum)
- Timb (Timpani)
- Harp
- GS I (Grand Staff I)
- Dx7 II (Double Bass II)
- Dx7 III (Double Bass III)
- I (Violins I)
- Violins II
- Violas
- VC (Violoncello)
- CB (Contrabass)

Handwritten Annotations:

- [Hand-copied by Bill W. Rebel]
- 8. DA →
- 8. 2
- 8. 3
- 8. 4
- 8. 5
- 8. 6
- 8. 7
- 8. 8
- 8. 9
- 8. 10
- 8. 11
- 8. 12
- 8. 13

Other Markings:

- 6. 2
- 6. 3
- 6. 4
- 6. 5
- 6. 6
- 6. 7
- 6. 8
- 6. 9
- 6. 10
- 6. 11
- 6. 12
- 6. 13

(Cont.) "The Family"

[Baby]

Handwritten musical score for "The Family" (Cont.), featuring a variety of instruments and vocal parts. The score is written on multiple staves, with measures numbered 14 through 17 circled at the bottom.

Instruments and Parts:

- Flutes
- Oboes
- Clarinet (B \flat)
- Bassoon (B \flat)
- Fog
- C. Fog
- TPTs (B \flat) I, II, III
- XYlophone
- Harp
- Expander
- Violins
- Violas
- VC
- CB

Handwritten Annotations:

- [Baby]** (Red ink)
- [Hand-copied by Bill Wrobel]** (Red ink)
- (Sant)** (Santitas)
- mf** (mezzo-forte)
- gliss** (glissando)
- etc.** (et cetera)
- Grassano**

Measure Numbers: 14, 15, 16, 17 (circled at the bottom of the page)

(Cont.) "The Family"

[BABY]

Jerry Goldsmith

Flutes

Oboes

Clars (B3)

Fag

Contrabass

(4) Horns

Pos

Tuba

African Marimba

Tam Tam

Timp

Dxy

OB8

Jup. Ten

Violins I

Violins II

Viola

VC

CB

[Hand-copied by Bill Wrobel]

(25) (26) (27) (28)

(Cont.) "The Family"

[Baby]

Jerry Goldsmith

Handwritten musical score for "The Family" (Cont.) by Jerry Goldsmith. The score is written for a large ensemble, including woodwinds, brass, strings, and percussion. The tempo is marked (P. 14). The score is divided into measures, with some measures containing handwritten annotations such as "Hand-copied by Bill WROBEL". The score includes various musical notations, including notes, rests, and dynamic markings. The score is written in a single system, with measures numbered 53 through 57.

Flutes (P. 14) *mp* (etc.)

Oboes *mp* (etc.)

Clars (G) (etc.)

Fog c. Fog

Horns (P)

Tpts (P)

Pos

Tuba

African mramba

Small Loo-Johns (shelly)

Harp

Dx7 I

Dx7 II

Jup. Tan

I

II

Violax

VC

CB

Hand-copied by Bill WROBEL

53 54 55 56 57

“Papa’s Death” Reel 5 pt 1. 4/4 time, 176 bars, 38 pp. Horn I is solo playing *mp* the big Dino theme starting on note middle C [written G] dotted half note to C quarter note to (Bar 2) C-C-C up to G quarter notes. The violins play four rapid “6” 16th figures Line 1 C-D-G-F-G-F, repeated three more times that bar, etc). Violins II are fingered tremolo dyad middle C/G whole notes to D whole note. The Moog plays tied whole notes middle C/D/F/G. The vibe & harp also play a part. Etc.

“Papa’s Gone” Reel 5 pt 2. 4/4 time. 19 bars, 3pp.

The muted violins play *pp* Line 2 F/G/Line 3 C/D whole notes tied to whole notes next few bars, as also the G.S. In Bar 10, the flutes and DX7II play the melody line of Line 1 G-Ab-G-Bb 8th notes (crossbeam connected) to Line 2 C half note tied to (Bar 11) C quarter note down to G-Ab 8th notes (crossbeam connected) to G-Ab-G-Bb 8th notes to (Bar 12) Line 2 C to D half notes. Violins play Line 2 D/Bb/Line 3 Eb/G whole notes tied to whole notes next bar. Violins play small octave Eb/Bb whole notes tied to next bar.

Muted VC play Great octave Bb/small octave G whole notes tied to next few bars, while CB play small octave Eb tied whole notes. The G.S. plays as the violins. The Moog plays Line 2 Bb legato down to Eb half notes. After a quarter rest in Bar 11, the Moog plays Bb quarter note down to Eb half note. Etc.

Handwritten musical score for a symphony orchestra and Moog synthesizer. The score is written on multiple staves, with the following instruments and parts labeled:

- Flute (Fl.)**: Top staff, playing a melodic line.
- Oboe**: Second staff, playing a melodic line.
- G.S. (Guitar/Synth)**: Third staff, playing a melodic line.
- DX7**: Fourth staff, playing a melodic line.
- Moog**: Fifth staff, playing a melodic line.
- UL (Violins)**: Sixth staff, playing a melodic line.
- V (Violas)**: Seventh staff, playing a melodic line.
- VC (Violoncello)**: Eighth staff, playing a melodic line.
- CB (Contrabass)**: Ninth staff, playing a melodic line.

The score includes various musical notations, including notes, rests, and dynamic markings. The Moog part is specifically noted as playing "Line 2 Bb legato down to Eb half notes" and "After a quarter rest in Bar 11, the Moog plays Bb quarter note down to Eb half note." The score is handwritten and appears to be a working draft.

Reel 6 pt 1 "Baby and Monkey" [Baby] Jerry Goldsmith

(a) Oboes *pp sempre*

(a) Clars (a) *pp sempre*

Xylophon

Dx7 II

Dx7 III

Hang *pp sempre*

Moog

I Violins

II Violins

Violas

VC

CB

Hand-copied by Bill W. Robel

52 53 54 55 56 57 58

"Baby and Monkey" Reel 6 pt 1 "Baby & Monkeys" in 4/4 meter. 90 bars, 16pp. Bars 52-61 at least the Violins are highlighted with the melody line. The oboes & clarinets play repeated 8th notes *sempre pp* (notes C#/G# primarily). The Dx7 III starts the dinosaur theme for four bars starting on Bar 56. So, on the bottom bass clef staff, it plays small octave D# dotted half note to D# quarter note to (Bar 57) D#-D#-D# up to A# quarter notes down to (Bar 58) D# quarter note (followed by a quarter and half rest). The oboes play *pp sempre* Line 1 D#/A# 8th notes 8X (repeated next two bars). Clarinets play similarly. Violins play Line 2 A# 8th (followed by an 8th rest) down to D# 8th (followed by an 8th rest) up to Line 3 D# dotted quarter note to C#-B# 16ths to (Bar 57) Line 2 A#-B#-A#-B# 8th notes to A#-A 8ths to G quarter note tied to 8th note next bar, and so forth. Viola are *saltando* on small octave A#/Line 1 D# 8ths (followed by an 8th/quarter/8th rests) to same 8th notes (followed by a quarter rest) to (Bar 57) A#/D# 8ths (followed by

two 8th rests) to same 8th notes (followed by a half rest). VC play similarly on Great octave A#/small octave D# 8th notes, and CB on small octave C# 8ths. Etc.

“Food Time” Reel 6 pt 2. 3/4 time, 138 bars, 26pp. Unfortunately I forgot the set up of this scene & music, but here is a portion of the music from Bars 63 thru 70.

“No Play” Reel 7 pt 1 "No Play" in 4/4 time, 65 bars, 14pp.

R7-P11 "No Play"

Handwritten musical score for R7-P11 "No Play". The score is written on ten staves, each with a label on the left. The notation includes various musical symbols, accidentals, and dynamics.

Obor: Staff 1. Contains a melodic line with a slur over the first two measures, a downward bow stroke, and a triplet of eighth notes. Accidentals: b_1 , b_+ , b_+ , b_+ , b_+ .

Ebd: Staff 2. Contains a melodic line with a slur over the first two measures, a downward bow stroke, and a triplet of eighth notes. Accidentals: b_+ , b_+ , b_+ , b_+ , b_+ . Dynamic: f .

Woodwinds: Staff 3. Contains a melodic line with a slur over the first two measures, a downward bow stroke, and a triplet of eighth notes. Accidentals: b_+ , b_+ , b_+ , b_+ , b_+ . Dynamic: f .

HP: Staff 4. Contains a melodic line with a slur over the first two measures, a downward bow stroke, and a triplet of eighth notes. Accidentals: b_+ , b_+ , b_+ , b_+ , b_+ . Dynamic: f .

Violins: Staff 5. Contains a melodic line with a slur over the first two measures, a downward bow stroke, and a triplet of eighth notes. Accidentals: b_+ , b_+ , b_+ , b_+ , b_+ . Dynamic: f .

Violas: Staff 6. Contains a melodic line with a slur over the first two measures, a downward bow stroke, and a triplet of eighth notes. Accidentals: b_+ , b_+ , b_+ , b_+ , b_+ . Dynamic: f .

VC: Staff 7. Contains a melodic line with a slur over the first two measures, a downward bow stroke, and a triplet of eighth notes. Accidentals: b_+ , b_+ , b_+ , b_+ , b_+ . Dynamic: f .

Violins I (Sands): Staff 8. Contains a melodic line with a slur over the first two measures, a downward bow stroke, and a triplet of eighth notes. Accidentals: b_+ , b_+ , b_+ , b_+ , b_+ . Dynamic: f .

Violas: Staff 9. Contains a melodic line with a slur over the first two measures, a downward bow stroke, and a triplet of eighth notes. Accidentals: b_+ , b_+ , b_+ , b_+ , b_+ . Dynamic: f .

VC: Staff 10. Contains a melodic line with a slur over the first two measures, a downward bow stroke, and a triplet of eighth notes. Accidentals: b_+ , b_+ , b_+ , b_+ , b_+ . Dynamic: f .

Red circled numbers 39 and 40 are written at the bottom of the page.

Galaxy R 7 P 1 A Who's Baby? Baby Goldsmith

Hand-copied by Bill Wachel

Handwritten musical score for "Who's Baby?" by Goldsmith. The score is written on multiple staves, including parts for Piano (P), Violin (V), and Cello (C). The notation includes various musical symbols, notes, and rests, with some parts marked as "Hand-copied by Bill Wachel". The score is divided into measures, with some measures containing specific musical instructions or annotations.

“Where’s Baby?” Reel 7 pt 1A. 3/4 time, 64 bars, 16pp.
 Orchestrated by A. Courage. Alto flute, bass clarinet, C.B. clarinet, Fags;
 DKB I[OB 8] [ABC 5]; small Loo-Johns, vibe, harp, DKB IV, Expander,
 Dx7, strings. Starts with the violins on tied notes F an octave apart. The
 synth sounds a six-note figure; the small loo-Johns are falling & rising gliss,
 and the alto flute plays 32nd note patterns. Etc.

“The Cave” Reel 8 pt 1 "The Cave" in 5/8 time, 228 bars, 47 pp.
 Gets wild around Bar 119 on when the bats come on scene. Four Violins I
 are divisi, fingered tremolos between dotted half notes Line 2 D#/G/A/Line
 3 E to Line 2 E/A/Bb/Line 3 D#. 16 violins II play rapid 16th notes, both
 sul pont and Saltando. They play Line 1 D#/G/A/Line 2 E 16ths 2X and then
 E/A/Bb/Line 2 D# 16ths 2 X. This four-note figure (connected by two
 crossbeams) are played 3X in Bar 119 and then 2X in Bar 120 (in 2/4 time).
 Oboes play *mf* on Line 1 G/Line 2 E 8ths to A/D# 8ths (connected by a
 crossbeam). This two-note figure is played 3X in Bar 119 and twice in Bar
 120. Clarinets play Line 1 D#/A to E/Bb 8th notes in that fashion.

Reel 8 PT 1
"The Cave"

[BABY]

Handwritten musical score for "The Cave" (Reel 8 PT 1). The score is written for a large ensemble, including Flutes, Oboes, Clars, Fags, Trumpets, Tuba, Timb, Harp, Dxs, Violins, Violas, VC, and CB. The tempo is marked (P. 24) and the key signature is G major (one sharp). The score is divided into measures, with measure numbers 116 through 122 indicated at the bottom. The score includes various musical notations such as notes, rests, and dynamic markings. A red bracket labeled [BABY] is placed above the Flutes staff. A red note "[Hand-copied by Bill W. Robel]" is written across the Tuba and Timb staves. The score ends with a "cont." marking.

Flutes (P. 24) (2:33) (P. 25) Bats! (92)

Oboes

Clars (P. 25)

Fags I II

Trumpets (P. 25) (S. 25)

Tuba

Timb

Harp

Dx 7 II

Dx 7 III

Violins (4) A B

Violas

VC

CB

[Hand-copied by Bill W. Robel]

(cont.)

116 117 118 119 120 121 122

(Cont.) 8 PT "The Cave" [BABY] Terry Goldsmith

(P.28) (2:38) (P.29)

(2) Flutes
(2) Oboes
(2) Clars (B)
(2) Fogs
(4) Horns (F)
(3) TPTs (B)
(3) Pos
Tuba
XYL
Timp
Harp
DX7 III
(4) Violins A
(8) Vlns B
(8) Vlns C
Violas
VC
CB

Hand-copied by Bill Wrobel

131 132 133 134 135 136

The DX7 III plays Line 2 D#/G/A/Line 3 E 8ths to E/A/Bb/Line 3 D# 8ths (followed by a quarter rest) to another such two-note figure. Muted trumpets in Bar 120 play a figure, followed by the timp and then the Xylophone and flutes. Etc. Bars 170 on are effective about when the antagonist yells, "You'll hit the animal!" Rapidly ascending/blazing fast

ent. The Cav. R EPT 1
(P.34)

Shane Dr. 129

Har 129

Violins 129

Violas 129

VC 129

CB 129

(170)

(171)

(172)

(173)

(174)

[Baby]

[Hand-copied by Bill Wadswold]

(Cont.)



(Cont.) The Cave
Real SPT 1

[Baby]

Jerry Goldsmith

P. 38 (3:30) (P. 39)

(2) Flutes
(2) Oboes
(2) Clars (85)
F. & C. Org.
Horns (Sands)
(3) Pos
Tuba
Xylo
Tam Tam
Timp
Harp
Dx2 III
I
Violins II
Violas
VC
CB

col. vms I
col. vms II
(m. tes off)
(open)
L. aring
gliss
col loco
col celli

(186) (187) (188) (189) (190)

[Hand-copied by Bill Wrobel]

(Cont.)

after "The game is over" in
Cont "The Que" Red 8pt 1

[Baby]

Jerry Goldsmith

(P. 42) (3:51)

Flutes I & II

Oboes I & II

Clars (6's) I & II

(2) Fags

(4) Horns F

Tpts (6's) 1, 2

Pos III

Tuba

Snare Cymbal

(5 Tps) ?? missing

199 200 201 202

[Hand-copied by Bill Wrobel]

(cont.)

(Cont.) ^{Real 891} The Cave [Baby] Jerry Goldsmith
 (P. 45) (4:01)

(2) Flutes ^{col. Vlns. I}
 (2) Oboes ^{col. Vlns. II}
 (2) Clars (B^b) ^{col. Vlns. I}
 (2) Fags ^{col. Vlns. II}
 (4) Horns (F) ^{col. Vlns. I}
 (3) Tpts (B^b) ^{col. Vlns. II}
 (3) Pos ^{col. Vlns. I}
 Tuba ^{col. Vlns. II}
 Snare DR. ^{col. Vlns. I}
 Timbales ^{col. Vlns. II}
 Bass DR. ^{col. Vlns. I}
 Timb. ^{col. Vlns. II}
 Harp ^{col. Vlns. I}
 G.S. I ^{col. Vlns. II}
 Moog ^{col. Vlns. I}
 Dx7 II ^{col. Vlns. II}
 Violins I ^{col. Vlns. I}
 Violins II ^{col. Vlns. II}
 Violas ^{col. Vlns. I}
 VC ^{col. Vlns. II}
 CB ^{col. Vlns. I}

Hand-copied by Bill Wrobel
 (cont.)

209 210 211 212 213 214 215 216

“Baby’s Gone” Reel 8 pt 4. 2/2 Cut time 43 bars, 10 pages. Nice use of the strings again bars 24-29. Notes sustained on C/G. The Vibe & harp make a two bar passage with accompanying quarter note descents of the flutes & clarinets. Then two Dx7 synths come in the picture, followed by the bass clarinet and Fags. Strings now on A-flat (major) or Ab/C/Eb. The English Horn then plays a solo passage of the dinosaur theme.

Handwritten musical score for "Baby's Gone" Reel 8 pt 4. The score is written on ten staves. The top staff is for the Piano and Harp (labeled "Jup Piano HT"). The next two staves are for Violins and Viola. The bottom three staves are for Cello and Bass. The score is written in 2/2 cut time. There are handwritten annotations in the margins, including "814" and "8.6" in the top right, and "24", "25", and "26" in the bottom right. The bottom left corner of the page contains the text: "DY GREEN MUSIC Hollywood, CA 90028 (310) 466-2491 P-566".



8-4 Rocky's Game Goldsmith

Fls

Ohs

Cls

Fgys

Lib

HP

Small

C.S.F.

DX VII

DX IX

VLN

VS

VC

CB

(Hand-registered by Bill Wehner)

(29) (30) (31) (32) (33) (34) (35) (36) (37) (38) (39) (40)

Sightation

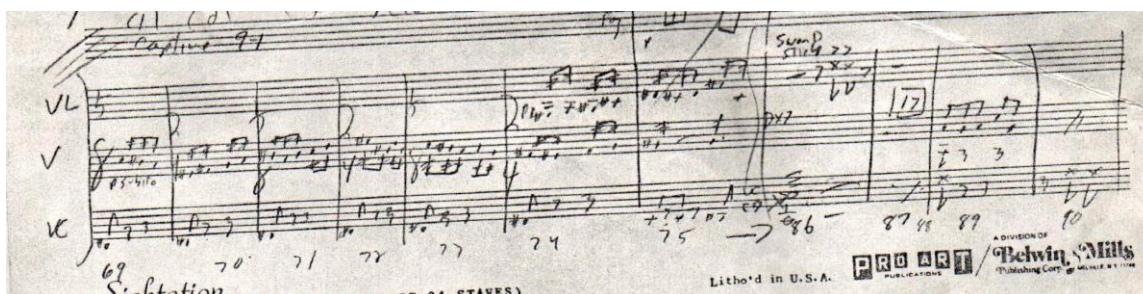
No. 10 (PLAIN SCORE-24 STAVES)

Litho'd in U.S.A.

PRO ART PUBLICATIONS

A DIVISION OF Belwin Mills Publishing Corp. MENLO PARK, CALIF.

“The Captive” Reel 9 pt 1. 4/4 time, 130 bars, 25 pp.



“Mother Is Free” Reel 9 pt 2. 5/8 time, 143 bars, 36 pp.
Orchestrated by A. Courage.

“Baby’s Alive” [Finale] Reel 10 pt 1. 4/4 time, 188 bars, 43 pp.
More 16th note flourishes characteristic of Goldsmith starting Bar 68.

Reel 1091 "Baby's Alive" (Finale) Jerry Goldsmith

Flutes (P.36) (92) *mf*

Oboe *mf*

Clars (B^b) (92) *mf*

Fags *mf*

(4) Horns (94) *mf*

Small Tambourine

Drums

Violins I (cont.)

Violins II *cob. I*

Violas *Div. mf*

VC *mf*

CB *mf*

Hand-copied by Bill WRubel

156 157 158 159 160 161

Flute I & clarinet I play a two bar melody figure. The Sword Stick strikes on Bar 70. Clarinet I & Fag I play a figure starting on bar 91. The Synths are still playing largely quarter notes. Starting on Bar 73 the Horns play the Dino theme, starting on note D. By Bar 75 brass wind chimes come into play, the harp is gliss, and the violins start to play a melody line while the violas take over the 16th note flourishes. Very happy music!

(Cont.) "Baby's Alive" (Finale)
 (P. 42) (P. 43) **[Baby]** Jerry Goldsmith

Handwritten musical score for "Baby's Alive" (Finale) by Jerry Goldsmith. The score is for a full orchestra and includes parts for Flutes, Oboes, Clarinets, Fagots, Horns, Traps, Percussion, Snare Drum, Timpani, Bass Drum, Tam-Tam, Harp, Violins, Violas, Violoncello, and Contrabass. The score is written on multiple staves with various musical notations including notes, rests, and dynamic markings. A red bracket labeled "[Baby]" is placed above the first staff. A red note "[Hand copied by Bill Warhol]" is written in the middle of the score. The page number 31 is at the bottom.

Revised to pdf format June 16, 2004 at 6:45 pm

© Copyright 2004 Bill Wrobel

Copyright (c) 2018 Bill Wrobel

Completed Friday, September 14, 2018 at 10:11 am PDT]

